

# Harmony<sup>®</sup> XAP, XB2SL control stations and enclosures

For control and signaling units Ø 22

Catalog

January **2015**



# How can you fit a 6000-page catalog in your pocket ?

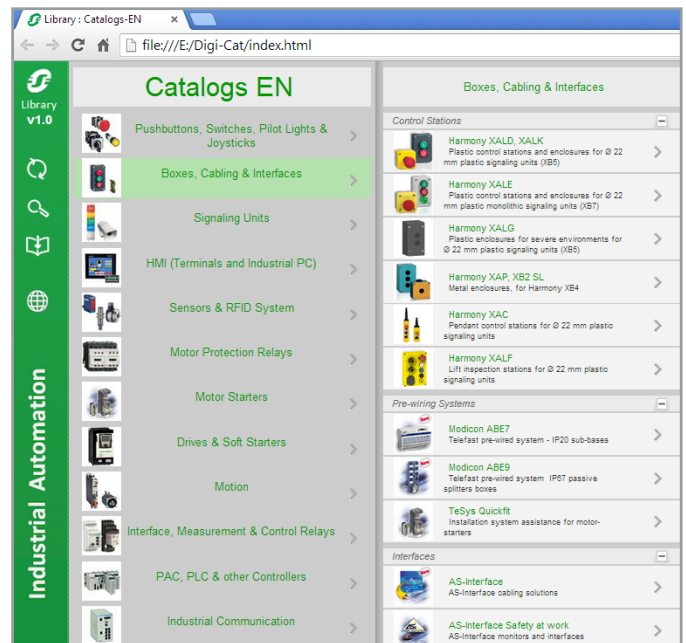
Schneider Electric provides you with the complete set of industrial automation catalogs all on a handy USB key for PC or in an application for tablets



## Digi-Cat, a handy USB key for PC



- > Convenient to carry
- > Always up-to-date
- > Environmentally friendly
- > Easy-to-share format



Contact your local representative to get your own Digi-Cat



## e-Library, the app for tablets

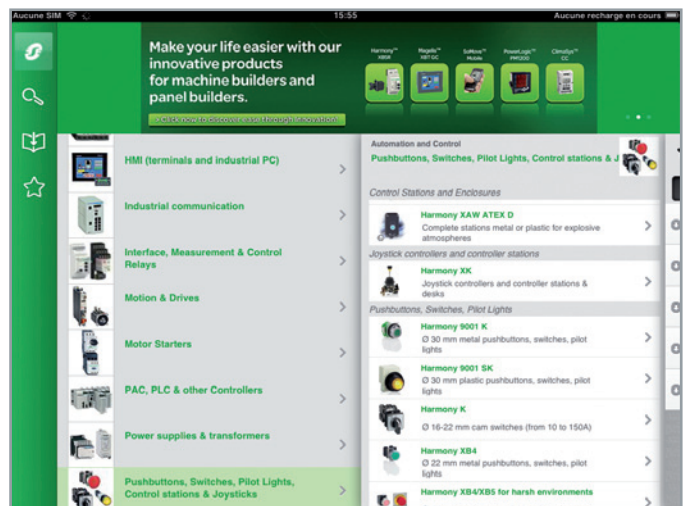
If you have an iPad®:

- > Go to the App Store and search for e-Library
- > or scan the QR code



If you have an Android tablet:

- > Go to the Google Play Store™ and search for eLibrary
- > or scan the QR code



# General contents

Selection guide .....	1
Polyester and metal control stations .....	2
Control stations for specific applications..	3
Product reference index .....	4



---

Selection guide for control stations and enclosures

*Selection guide* ..... page 1/2

Type of applications	All applications		
Enclosures	Plastic		Glass-reinforced polyester
	Complete stations and separate components for customer assembly		Empty insulated enclosures



Main feature	Pre-drilled control stations		Pre-drilled or undrilled enclosures
Associated control and signalling units	Harmony XB5 with plastic bezel		Harmony XB7, monolithic, plastic Harmony XB4 with metal bezel Harmony XB5 with plastic bezel
Number of cut-outs for Ø 22 control and signalling units	1, 2, 3, 4 or 5	1, 2 or 3 (complete stations) 1, 2, 3, 4 or 5 (empty enclosures)	1, 2 or 3 1, 2, 4, 8 or 16
Material	Polycarbonate		ABS Glass-reinforced polyester
Colour	Yellow lid Light grey base	Dark grey lid Light grey base	Light grey or yellow lid Light grey base Coloured grey throughout
Degree of protection	IP 65 / NEMA Enclosure type 4, 4X and 13		IP 54 IP 65
Function	Emergency Stop or Emergency switching off	Start or Stop Start-Stop with pilot light Motion control	According to equipment fitted: <input type="checkbox"/> Start or Stop <input type="checkbox"/> Start-Stop with pilot light <input type="checkbox"/> Motion control <input type="checkbox"/> Emergency stop
Cable entries	Knock-outs (CM12)	Knock-outs (ISO 20)	Undrilled
Type references	<b>XALK</b>	<b>XALD</b>	<b>XALE</b> <b>XAPA</b>

				Specific applications	
Metal	Metal front plate, insulated protective rear cover		Plastic	Metal	
Empty enclosures	Empty, flush mounting enclosures: front plate + rear cover		Control stations for severe environments	Lift inspection stations	Key operated control stations



Pre-drilled enclosures	Pre-drilled or undrilled enclosures	Pre-drilled front plates & rear covers	Pre-drilled empty control stations	Pre-drilled empty enclosures or fitted stations	Fitted stations
Harmony XB4 with metal bezel Harmony XB5 with plastic bezel			Harmony XB5 with plastic bezel	Harmony XB5 or XB7 with plastic bezel	With key lock bezel
8, 16, 24, 30 or 40	1, 2, 3, 4, 6, 8 or 12	1, 2, 3, 4 or 5	1, 2, 3, 4 or 5	1, 2, 3, 4, 5 or 6 with or without power socket	–
Aluminium alloy or sheet steel	Zinc or aluminium alloy	Front plate: brushed aluminium Rear cover: polystyrene	Mineral reinforced polyamide	Polycarbonate	Zinc alloy
Blue lid and base	<b>XAPM:</b> Blue lid Blue base <b>XAPJ:</b> Yellow lid Blue base	Unpainted aluminium	Black lid Black base	Yellow lid Light grey base	Grey
IP 54	IP 65		IP 66 IP 69K	IP 44 (with power socket) IP 55 or IP 66 depending on model	IP 54
According to equipment fitted: <input type="checkbox"/> Start or Stop <input type="checkbox"/> Start-Stop with pilot light <input type="checkbox"/> Motion control <input type="checkbox"/> Emergency stop					Start-Stop
<input type="checkbox"/> Tapped entries for cable-glands <input type="checkbox"/> or undrilled	Tapped entries for cable-glands	Knock-outs (with protective rear cover)	Two ISO 20 open entries	<input type="checkbox"/> Knock-outs (CM12) <input type="checkbox"/> or undrilled	Tapped for cable-glands
<b>XB2SL</b>	<b>XAPM, XAPJ</b>	<b>XAPE</b>	<b>XALG</b>	<b>XALF</b>	<b>XAPS</b>



---

## Polyester and metal control stations

### ■ General

- Presentation of range ..... page 2/2

### ■ Polyester enclosures

- XAPA, polyester enclosures, undrilled or with cut-outs  
for Harmony Ø 22 control and signaling units..... page 2/3

### ■ Metal control stations

- Die-cast metal enclosures XAPM and XAPJ..... page 2/4
- Sheet-steel enclosures XB2SL ..... page 2/5
- Die-cast metal enclosures XB2SL..... page 2/5
- Flush-mounting enclosures XAPE ..... page 2/5





# Control stations and enclosures

## Polyester, metal and flush mounting enclosures

### Undrilled or with cut-outs for Ø 22 control and signaling units

#### General

4 ranges of enclosures are presented here below and allow to meet various applications. The main functions of these enclosures are: On, Off, Start-Stop, Emergency stop and Motion control.

#### Insulated enclosures XAPA, glass-reinforced polyester

Insulated enclosures XAPA, in glass-reinforced polyester (color: Grey), are highly resistant to acids, bases, sea water, mineral salts, all solvents, petrol, diesel, oils and greases.

#### Environment

- Protection degree: IP 65 (conforming to standard EN/IEC 60529)
- Products certifications: IEC (all models) and UL, CSA (depending on model)
- Electric shock protection: class II conforming to standard EN/IEC 61140.

#### Connection

- Pre-drilled enclosures with 1 to 16 cut-outs
- Or enclosures supplied with undrilled cable entries.

#### Die-cast metal enclosures XAPM and XAPJ

XAPM and XAPJ enclosures original material: aluminium or zinc alloy. In order to adapt to specific applications, special treatments can be obtained on request.

Enclosures have the following colors:

- XAPM : Blue base and lid,
- XAPJ : Blue base and Yellow lid.

#### Environment

- Protection degree: IP 65 (conforming to standard EN/IEC 60529).
- Products certifications:
  - CSA ENCLOSURE 4, 5 (version H7),
  - UL ENCLOSURE 1, 3, 4 and 12 (version H2).
- Electric shock protection: class I conforming to standard EN/IEC 61140.

#### Connection

- Tapped for cable glands, with 1 to 12 cut-outs
- Or enclosures supplied with undrilled cable entries.

#### Metal enclosures XB2SL

XB2SL enclosures original material: aluminium alloy or sheet steel (color: Blue). In order to adapt to specific applications, special treatments can be obtained on request.

#### Environment

- Protection degree: IP 54 (conforming to standard EN/IEC 60529)
- Electric shock protection: class I conforming to standard EN/IEC 61140.

#### Connection

- XB2SL in aluminium alloy: tapped entries for cable glands (8 to 40 cut-outs)
- or XB2SL in sheet steel: undrilled cable entries.

#### Flush mounting enclosures XAPE

Flush mounting enclosures XAPE offer a good resistance to organic acids, diluted mineral acids, salts, alcohol, acetone, chloride and fluoride solvents, oils and petrols.

They involve:

- An anodised aluminium front plate, not painted, with 1 to 5 cut-outs,
- An insulated protective rear cover.

#### Environment

- Protection degree: IP 65 (conforming to standard EN/IEC 60529)
- Electric shock protection: class I conforming to standard EN/IEC 61140.

#### Connection

Connection can be made through knock-out cable entries.



XAPA1104



XAPA2108



XAPA3116



XAPA1100



XAPA2100



XAPA3100

## Insulated enclosures XAPA, glass-reinforced polyester, colored grey throughout

Description	Dimensions (1) w x h x d mm/in.	Number of cut-outs	Number of rows		Reference	Weight kg/lb
			Vertical	Horizontal		
Without hinges Usable depth 83 mm/3.27 in.	85 x 146 x 87/ 3.35 x 5.75 x 3.43	1	1	1	XAPA1110	0.470/1.036
		2	1	2	XAPA1120	0.450/0.992
		4	2	2	XAPA1104	0.460/1.014
	85 x 226 x 87/ 3.35 x 8.90 x 3.43	8	2	4	XAPA2108	0.580/1.279
	151 x 241 x 87/ 5.94 x 9.49 x 3.43	16	4	4	XAPA3116	0.820/1.808
With hinges Usable depth 87 mm/3.43 in.	151 x 241 x 87/ 5.94 x 9.49 x 3.43	16	4	4	XAPA4116	0.850/1.874

Description	For use with	Reference	Weight kg/lb
Earthing plates sheet steel with earth screw	XAPA1110	XAPZ110	0.080/0.176
	XAPA1120	XAPZ120	0.070/0.154
	XAPA1104	XAPZ104	0.070/0.154
	XAPA2108	XAPZ208	0.110/0.243
	XAPA3116 and A4116	XAPZ316	0.160/0.353

## Insulated enclosures XAPA, glass-reinforced polyester, colored grey throughout, undrilled

Description	Dimensions (1) w x h x d mm/in.	Reference	Weight kg/lb
Without hinges Usable depth 87 mm/3.43 in.	85 x 146 x 87/ 3.35 x 5.75 x 3.43	XAPA1100	0.470/1.036
	85 x 226 x 87/ 3.35 x 8.90 x 3.43	XAPA2100	0.600/1.323
	151 x 241 x 87/ 5.94 x 9.49 x 3.43	XAPA3100	0.860/1.896
With hinges Usable depth 87 mm/3.43 in.	151 x 241 x 87/ 5.94 x 9.49 x 3.43	XAPA4100	0.890/1.962

Description	For use with	Reference	Weight kg/lb
Earthing plates with earth screw	XAPA1100	XAPZ100	0.080/0.176
	XAPA2100	XAPZ200	0.130/0.287
	XAPA3100 and A4100	XAPZ300	0.200/0.441

(1) Please see our website [www.schneider-electric.com](http://www.schneider-electric.com) for more precised information about dimensions of components.

**Other versions** Enclosures with cut-outs for Ø 30 control and signaling units.  
Enclosures pre-fitted with Ø 22 units.  
Please consult our Customer Care Centre.

# Control stations and enclosures

## Metal control stations XAPM and XAPJ

Undrilled or with cut-outs for Ø 22 control and signaling units

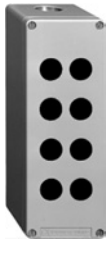
2



XAPM2203



XAPM2504



XAPM4508



XAPJ1201



XAPM11



XAPM31

### Die-cast metal enclosures XAPM (blue lid and base)

Description	Dimensions (1) w x h x d mm/in.	Number of cut-outs	Number of rows		Reference	Weight kg/lb	
			Vertical	Horizontal			
Zinc alloy Usable depth 51.5 mm/ 2.03 in.	80 x 80 x 51.5/ 3.15 x 3.15 x 2.03	1	1	1	XAPM1201	0.455/1.003	
		2	2	1	XAPM1202	0.450/0.992	
	80 x 130 x 51.5/ 3.15 x 5.12 x 2.03	2	1	2	XAPM2202	0.610/1.345	
		3	1	3	XAPM2203	0.605/1.334	
		4	2	2	XAPM2204	0.600/1.323	
	80 x 175 x 51.5/ 3.15 x 6.89 x 2.03	3	1	3	XAPM3203	0.870/1.918	
		4	1	4	XAPM3204	0.880/1.940	
		6	2	3	XAPM3206	0.870/1.918	
	Zinc alloy Usable depth 77 mm/ 3.03 in.	80 x 80 x 77/ 3.15 x 3.15 x 3.03	1	1	1	XAPM1501	0.605/1.334
			2	2	1	XAPM1502	0.600/1.323
		80 x 130 x 77/ 3.15 x 5.12 x 3.03	2	1	2	XAPM2502	0.810/1.786
			3	1	3	XAPM2503	0.815/1.797
4			2	2	XAPM2504	0.810/1.786	
80 x 175 x 77/ 3.15 x 6.89 x 3.03		3	1	3	XAPM3503	1.145/2.524	
		4	1	4	XAPM3504	1.140/2.513	
		6	2	3	XAPM3506	1.130/2.491	
80 x 220 x 77/ 3.15 x 8.66 x 3.03		6	1	6	XAPM4506	1.380/3.042	
		8	2	4	XAPM4508	1.370/3.020	
Aluminium Usable depth 77 mm/ 3.03 in.		85 x 310 x 77/ 3.35 x 12.20 x 3.03	8	1	8	XAPM5508	0.810/1.786
			12	2	6	XAPM5512	0.790/1.742

### Die-cast metal enclosures XAPJ (yellow lid, blue base)

Zinc alloy Usable depth 51.5 mm/ 2.03 in.	80 x 80 x 51.5/ 3.15 x 3.15 x 2.03	1	1	1	XAPJ1201	0.455/1.003
Zinc alloy Usable depth 77 mm/ 3.03 in.	80 x 80 x 77/ 3.15 x 3.15 x 3.03	1	1	1	XAPJ1501	0.605/1.334

### Die-cast metal enclosures XAPM and XAPJ, undrilled

Description	Material	Dimensions (1) w x h x d mm/in.	Reference	Weight kg/lb
Blue lid and base	Zinc alloy Usable depth 51.5 mm/2.03 in.	80 x 80 x 51.5/3.15 x 3.15 x 2.03	XAPM11	0.460/1.014
		80 x 130 x 51.5/3.15 x 5.12 x 2.03	XAPM21	0.620/1.367
		80 x 175 x 51.5/3.15 x 6.89 x 2.03	XAPM31	0.900/1.984
Zinc alloy Usable depth 77 mm/3.03 in.	Zinc alloy	80 x 80 x 77/3.15 x 3.15 x 3.03	XAPM14	0.610/1.345
		80 x 130 x 77/3.15 x 5.12 x 3.03	XAPM24	0.830/1.830
		80 x 175 x 77/3.15 x 6.89 x 3.03	XAPM34	1.160/2.557
		80 x 220 x 77/3.15 x 8.66 x 3.03	XAPM44	1.410/2.513
Aluminium Usable depth 77 mm/3.03 in.	Aluminium	85 x 310 x 77/3.35 x 12.20 x 3.03	XAPM54	0.850/1.874
Yellow lid, blue base	Zinc alloy Usable depth 51.5 mm/2.03 in.	80 x 80 x 51.5/3.15 x 3.15 x 2.03	XAPJ11	0.460/1.014
Zinc alloy Usable depth 77 mm/3.03 in.	Zinc alloy	80 x 80 x 77/3.15 x 3.15 x 3.03	XAPJ14	0.610/1.345
		80 x 80 x 77/3.15 x 3.15 x 3.03	XAPJ34	1.160/2.557

(1) Please see our website [www.schneider-electric.com](http://www.schneider-electric.com) for more precised information about dimensions of components.

#### Other versions

Enclosures with cut-outs for Ø 30 control and signaling units.  
Enclosures pre-fitted with Ø 22 units.  
Die-cast metal enclosures XAPM with ISO cable entries (H29 version)  
Die-cast metal enclosures XAPM with UL/CSA certification (H7 version).  
Please consult our Customer Care Centre.



XB2SL64007



XB2SL42009



XAPE301



XAPE302



XAPE303



XAPE305



ZB5SZ3

## Sheet steel enclosures XB2SL (blue lid and base)

Description	Dimensions (1) w x h x d mm/in.	Number of cut-outs	Number of rows		Reference	Weight kg/lb
			Vertical	Horizontal		
Sheet steel Usable depth 120 mm/ 4.72 in	200 x 200 x 120/ 7.87 x 7.87 x 4.72	8	4	2	XB2SL42007	3.100/6.834
	200 x 260 x 120/ 7.87 x 10.24 x 4.72	16	4	4	XB2SL44007	3.900/8.598
	260 x 260 x 120/ 10.24 x 10.24 x 4.72	24	6	4	XB2SL64007	4.700/10.362
	260 x 320 x 120/ 10.24 x 12.60 x 4.72	30	6	5	XB2SL65007	5.500/12.125
	320 x 320 x 120/ 12.60 x 12.60 x 4.72	40	8	5	XB2SL85007	6.200/13.669

## Die-cast metal enclosures XB2SL (blue lid and base)

Description	Dimensions (1) w x h x d mm/in.	Number of cut-outs	Number of rows		Reference	Weight kg/lb
			Vertical	Horizontal		
Aluminium Usable depth 78 mm/ 3.07 in.	150 x 150 x 78/ 5.91 x 5.91 x 3.07	6	3	2	XB2SL32009	0.970/2.138
		8	4	2	XB2SL42009	0.960/2.116

## Flush mounting enclosures XAPE

Description	Material	Number of cut-outs	Dimensions (1) w x h x d mm/in.	Reference	Weight kg/lb
Front plates with fixing screws	Aluminium, anodised, not painted	1	72 x 72/ 2.83 x 2.83	XAPE301	0.050/0.110
		2	72 x 105/ 2.83 x 4.13	XAPE302	0.075/0.165
		3	72 x 138/ 2.83 x 5.43	XAPE303	0.095/0.209
		4	72 x 171/ 2.83 x 6.73	XAPE304	0.115/0.254
		5	72 x 204/ 2.83 x 8.03	XAPE305	0.135/0.298
Protective rear covers	Insulated	For front plate XAPE301		XAPE901	0.040/0.088
		For front plate XAPE302		XAPE902	0.050/0.110
		For front plate XAPE303		XAPE903	0.060/0.132
		For front plate XAPE304		XAPE904	0.070/0.154
		For front plate XAPE305		XAPE905	0.080/0.176

## Accessories

Description	For use with	Color	Sold in lots of	Unit reference	Weight kg/lb
Metal circular blanking plug	Ø 22 control and signaling units XB4, metal	Chromium plated	10	ZB4SZ3	0.023/0.051
		Black	10	ZB4SZ37	0.023/0.051
Plastic square blanking plug (with fixing nut)	Ø 22 control and signaling units XB5, plastic	Black	10	ZB5SZ5	0.009/0.020
Plastic circular blanking plug (with fixing nut)	Ø 22 control and signaling units XB5, plastic	Black	10	ZB5SZ3	0.009/0.020

(1) Please see our website [www.schneider-electric.com](http://www.schneider-electric.com) for more precised information about dimensions of components.

## Other versions

Enclosures with cut-outs for Ø 30 control and signaling units.  
Enclosures pre-fitted with Ø 22 units.  
Please consult our Customer Care Centre.



---

Control stations for specific applications

■ **General**

□ Presentation of range ..... *page 3/2*

■ **Control stations for specific applications**

□ XAPS key operated control stations..... *page 3/2*

### General

#### Operating principle

XAPS control stations are fitted with a key operated lock and are designed to provide a starting or authorisation sequence by using the key. These control stations are supplied with 2 keys.  
To prevent unauthorised operation (shorting of the contact block) or tampering, the stations are fitted with a special lock featuring a pre-determined key position (other than its withdrawal position) that only allows removal of the front cover by the key holder.

#### Environment

- Protection degree:
  - IP 54 conforming to standard IEC 60529,
  - IK 08 conforming to standard EN 50102.
- Conformity to standards: EN/IEC 60947-5-1.
- Electric shock protection: class I conforming to standard EN/IEC 61140.

#### Connection

- Screw clamp terminals (cross head screws slotted for 4 and 5.5 mm/0.16 and 0.22 in. screwdrivers).
- Cable entries:
  - 1 tapped entry for cable gland
  - 1 entry through the rear (Ø 17 mm/Ø 0.67 in. knock-out), with rubber cable grommet.

### References

#### Control stations with 1 N/O contact per function

Description	Key withdrawal	Marking	Dimensions (1) w x h x d mm/in.	Mounting	Reference	Weight kg/lb	
2 position, stay put	Left-hand position	O	I	75 x 15/ 2.95 x 0.59	Surface	XAPS11111N (2)	0.830/1.830
				100 x 100/ 3.94 x 3.94	Flush	XAPS14111N (2)	0.890/0.962
2 position, spring return from right to left	Left-hand position			75 x 15/ 2.95 x 0.59	Surface	XAPS11221N (2)	0.830/1.830
				100 x 100/ 3.94 x 3.94	Flush	XAPS14221N (2)	0.890/0.962
2 position, stay put + 2 spring return buttons	Left-hand position	↑ O	↓ I	80 x 130/ 3.15 x 5.12	Surface	XAPS21111	1.080/2.381
				100 x 170/ 3.94 x 6.69	Flush	XAPS24111	1.190/4.211
3 position, stay put	Centre position	↑ O ↓		75 x 15/ 2.95 x 0.59	Surface	XAPS11331N (2)	0.850/1.874
				100 x 100/ 3.94 x 3.94	Flush	XAPS14331N (2)	0.910/2.006
3 position, spring return from left and right to centre	Centre position	↑ O ↓		75 x 15/ 2.95 x 0.59	Surface	XAPS11431N (2)	0.850/1.874
				100 x 100/ 3.94 x 3.94	Flush	XAPS14431N (2)	0.910/2.006
3 position, stay put + 1 spring return button	Centre position	← O →		80 x 130/ 3.15 x 5.12	Surface	XAPS21331	1.070/2.359
				100 x 170/ 3.94 x 6.69	Flush	XAPS24331	1.080/2.381
3 position, spring return from left and right to centre + 1 spring return button	Centre position	← O →		80 x 130/ 3.15 x 5.12	Surface	XAPS21431	1.070/2.359
				100 x 170/ 3.94 x 6.69	Flush	XAPS24431	1.080/2.381

(1) Please see our website [www.schneider-electric.com](http://www.schneider-electric.com) for more precised information about dimensions of components.

(2) For a control station with a specific key number, add the letter Z to the end of the reference and state the key number when ordering. Example: XAPS11111N becomes XAPS11111NZ.





References (continued)					
100 x 100 front plates (for XAPS11●●●N control stations)					
Description	Marking		Reference	Weight kg/lb	
2 position, stay put	O	I	XAPSZ11	0.045/0.099	
2 position		→	XAPSZ12	0.045/0.099	
3 position	↑	O ↓	XAPSZ13	0.045/0.099	
Separate components and spare parts					
Description	Type of contact	For use with control stations	Sold in lots of	Unit reference	Weight kg/lb
Standard contact blocks	N/O	XAPS1●●●●N	5	ZENL1111	0.015/0.033
		XAPS2●●●●	5	ZB2BE101	0.015/0.033
Accessories (for control stations XAPS11●●●N and XAPS14●●●N)					
Description	Key number	Reference		Weight (kg/lb)	
		Key only	2 keys + barrel (1)	Key only	2 keys + barrel
Keys	Number to be stated	XAPSZ50	XAPSZ15	0.011/0.024	0.140/0.309
	BC1011	XAPSZ01	XAPSZ16	0.011/0.024	0.140/0.309
	BC1025	XAPSZ02	XAPSZ17	0.011/0.024	0.140/0.309
	BC1029	XAPSZ03	XAPSZ18	0.011/0.024	0.140/0.309
	BC1031	XAPSZ04	XAPSZ19	0.011/0.024	0.140/0.309
	BC1069	XAPSZ05	XAPSZ20	0.011/0.024	0.140/0.309

(1) For keys and barrels with other numbers, please consult our Customer Care Centre.





---

Index

■ **Product reference index**..... page 4/2

<b>X</b>			
XAPA1100	2/3	XAPM5512	2/4
XAPA1104	2/3	XAPS11111N	3/2
XAPA1110	2/3	XAPS11221N	3/2
XAPA1120	2/3	XAPS11331N	3/2
XAPA2100	2/3	XAPS11431N	3/2
XAPA2108	2/3	XAPS14111N	3/2
XAPA3100	2/3	XAPS14221N	3/2
XAPA3116	2/3	XAPS14331N	3/2
XAPA4100	2/3	XAPS14431N	3/2
XAPA4116	2/3	XAPS21111	3/2
XAPE301	2/5	XAPS21331	3/2
XAPE302	2/5	XAPS21431	3/2
XAPE303	2/5	XAPS24111	3/2
XAPE304	2/5	XAPS24331	3/2
XAPE305	2/5	XAPS24431	3/2
XAPE901	2/5	XAPSZ01	3/3
XAPE902	2/5	XAPSZ02	3/3
XAPE903	2/5	XAPSZ03	3/3
XAPE904	2/5	XAPSZ04	3/3
XAPE905	2/5	XAPSZ05	3/3
XAPJ11	2/4	XAPSZ11	3/3
XAPJ14	2/4	XAPSZ12	3/3
XAPJ34	2/4	XAPSZ13	3/3
XAPJ1201	2/4	XAPSZ15	3/3
XAPJ1501	2/4	XAPSZ16	3/3
XAPM11	2/4	XAPSZ17	3/3
XAPM14	2/4	XAPSZ18	3/3
XAPM21	2/4	XAPSZ19	3/3
XAPM24	2/4	XAPSZ20	3/3
XAPM31	2/4	XAPSZ50	3/3
XAPM34	2/4	XAPZ100	2/3
XAPM44	2/4	XAPZ104	2/3
XAPM54	2/4	XAPZ110	2/3
XAPM1201	2/4	XAPZ120	2/3
XAPM1202	2/4	XAPZ200	2/3
XAPM1501	2/4	XAPZ208	2/3
XAPM1502	2/4	XAPZ300	2/3
XAPM2202	2/4	XAPZ316	2/3
XAPM2203	2/4	XB2SL32009	2/5
XAPM2204	2/4	XB2SL42007	2/5
XAPM2502	2/4	XB2SL42009	2/5
XAPM2503	2/4	XB2SL44007	2/5
XAPM2504	2/4	XB2SL64007	2/5
XAPM3203	2/4	XB2SL65007	2/5
XAPM3204	2/4	XB2SL85007	2/5
XAPM3206	2/4		
XAPM3503	2/4	<b>Z</b>	
XAPM3504	2/4	ZB2BE101	3/3
XAPM3506	2/4	ZB4SZ3	2/5
XAPM4506	2/4	ZB4SZ37	2/5
XAPM4508	2/4	ZB5SZ3	2/5
XAPM5508	2/4	ZB5SZ5	2/5
		ZENL1111	3/3

Harmony Innovation



**Schneider Electric Industries SAS**

Head Office  
35, rue Joseph Monier  
F-92500 Rueil-Malmaison  
France

[www.schneider-electric.com/control](http://www.schneider-electric.com/control)

The information provided in this documentation contains general descriptions and/or technical characteristics of the performance of the products contained herein. This documentation is not intended as a substitute for and is not to be used for determining suitability or reliability of these products for specific user applications. It is the duty of any such user or integrator to perform the appropriate and complete risk analysis, evaluation and testing of the products with respect to the relevant specific application or use thereof. Neither Schneider Electric nor any of its affiliates or subsidiaries shall be responsible or liable for misuse of the information contained herein.

Design: Schneider Electric  
Photos: Schneider Electric

DIA5ED2130511EN