



Capacity from 50 kg to 500 kg



- ALUMINUM ALLOY
- COMBINED ERROR  $\leq \pm 0.02\%$  (0.017% C4)
- PROTECTION CLASS IP65

CAPACITY	kg	ACCURACY CLASS				EAC	EAC Ex	PLATFORM DIMENSION (mm)	NET WEIGHT OF LOAD CELL (kg)	CODE
		C3	C4							
50		•	–	•	•	•		600 x 600	1.7	APL50
100		•	–	•	•	•		600 x 600	1.7	APL100
150		•	•	•	•	•		600 x 600	1.7	APL150
200		•	•	•	•	•		600 x 600	1.7	APL200
300		•	•	•	•	•		600 x 600	1.7	APL300
500		•	•	•	•	•		600 x 600	1.7	APL500

ON REQUEST

### CERTIFICATIONS



OIML R60 C3

CERTIFICATIONS ON REQUEST



ATEX II 1GD (zone 0-1-2-20-21-22)



IECEX (zone 0-1-2-20-21-22)



OIML R60 C4



Complies with the Eurasian Custom Union standards

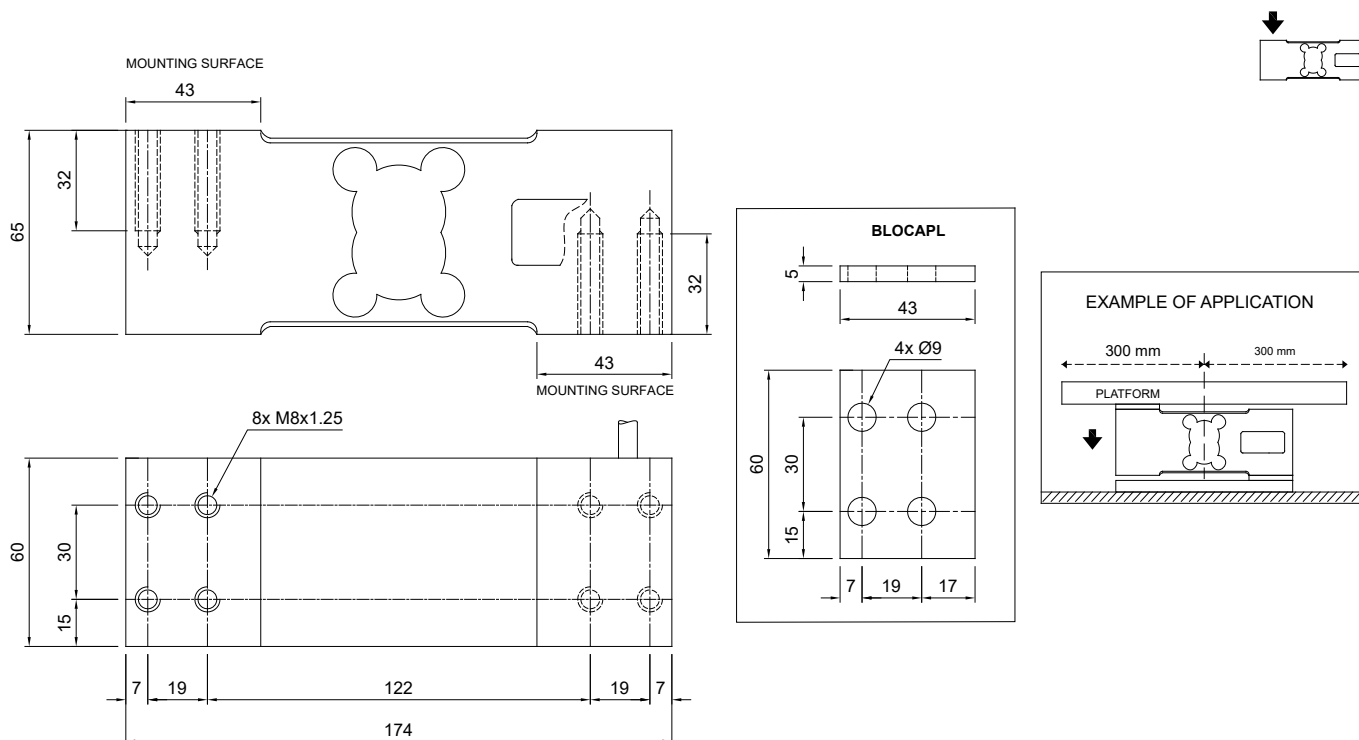


Complies with the Eurasian Custom Union standards for use in potentially explosive atmospheres

### COMPLEMENTARY ACCESSORIES

	DESCRIPTION	CODE
	Stainless steel and rubber waterproof kit (Ø 107 x 245 mm cable gland included)	IP68APLPRE
	Stainless steel drawn block.	BLOCAPL

### DIMENSIONS (mm)



### TECHNICAL FEATURES

Material	Aluminum alloy	
OIML R60 Accuracy class • Verification intervals	C3 • 3000	C4 • 4000
Nominal load (E max)	50 - 100 - 150 - 200 - 300 - 500 kg	150 - 200 - 300 - 500 kg
Minimum verification interval (V min)	E max / 12000	E max / 15000
Combined error	≤ ±0.02%	≤ ±0.017%
Protection class	IP65	
Rated output	2 mV/V ±10%	Input resistance 409 Ω ±6
Temperature effect on zero	0.0017% °C	Output resistance 350 Ω ±3
Temperature effect on span	0.0014% °C	Zero balance ≤ ±1%
Compensated temperature range	-10 °C / +40 °C	Insulation resistance ≥5000 MΩ
Operating temperature range	-35 °C / +65 °C	Safe overload (% of full scale) 150%
Creep at nominal load in 30 minutes	0.015%	Ultimate overload (% of full scale) 300%
Max supply voltage without damage	18 V	Deflection at nominal load 0.5 mm

### ELECTRICAL CONNECTIONS

Cable length	3 m
Cable diameter	6 mm
Cores	4/6 x 0.20 mm <sup>2</sup>

