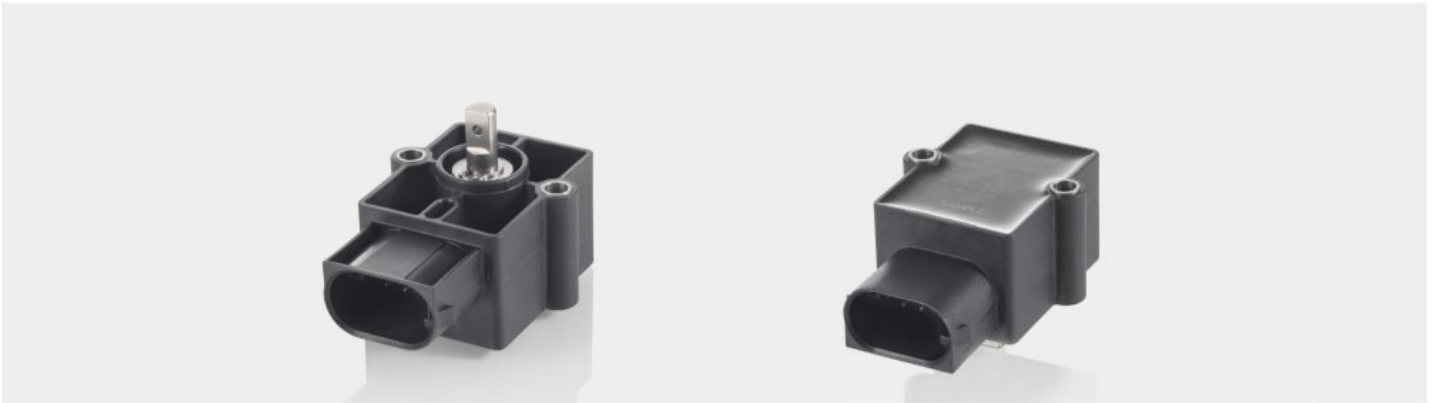


NOVOHALL
Rotary Sensor
Non-contacting

RSA-3200



**Resilient in Harsh Environments -
Rotary sensor with robust Hall technology
for mobile machinery**

- Touchless hall technology
- Electrical range up to 360°
- High protection class IP67 resp. IP6K9K (housing side)
- Resolution up to 14 bits
- Temperature range -40°C to +125°C
- One and multi-channel versions
- Optimized for use in mobile applications
- For highest EMC requirements such as ISO pulses and interference fields according to ISO 11452 and ECE directive
- Suitable for safety-relevant applications according to DIN EN ISO 13849
- Interfaces: voltage, current, CANopen, CAN SAE J1939
- Optional linkage lever mounting